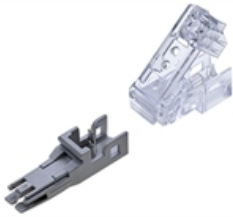


R319035 RMS45 Plug 1-Pair, unshielded

090.2853

**Description**

Field-terminated 1-pair plug, unshielded. Fast and simple connecting, requiring no special tools.

Cable information:

- Telephone ribbon cables 2.5x5 mm
- Round cables up to Ø 3.4 mm
- Patch wires 2x0.5 mm
- Wires and strands AWG26-24
- Conductor insulation max. Ø 1.1 mm

Weight

4.700 G

Technical Data

Connector class	connector
Number of connectors (A)	1
Connector type (A)	RMS45
Shielding - connector (B)	No
Color code RAL	7035
Color	light gray
Dimensions	26.5 x 5.4 x 8.1 mm
Material	Kunststoff: PEI
Poles	2

Modules & Accessories

R319031	Color Coding RMS45, anthracite
R319024	Color Coding RMS45, blue
R319025	Color Coding RMS45, brown
R319026	Color Coding RMS45, yellow
R319027	Color Coding RMS45, gray
R319028	Color Coding RMS45, green
R319029	Color Coding RMS45, red
R319030	Color Coding RMS45, violet