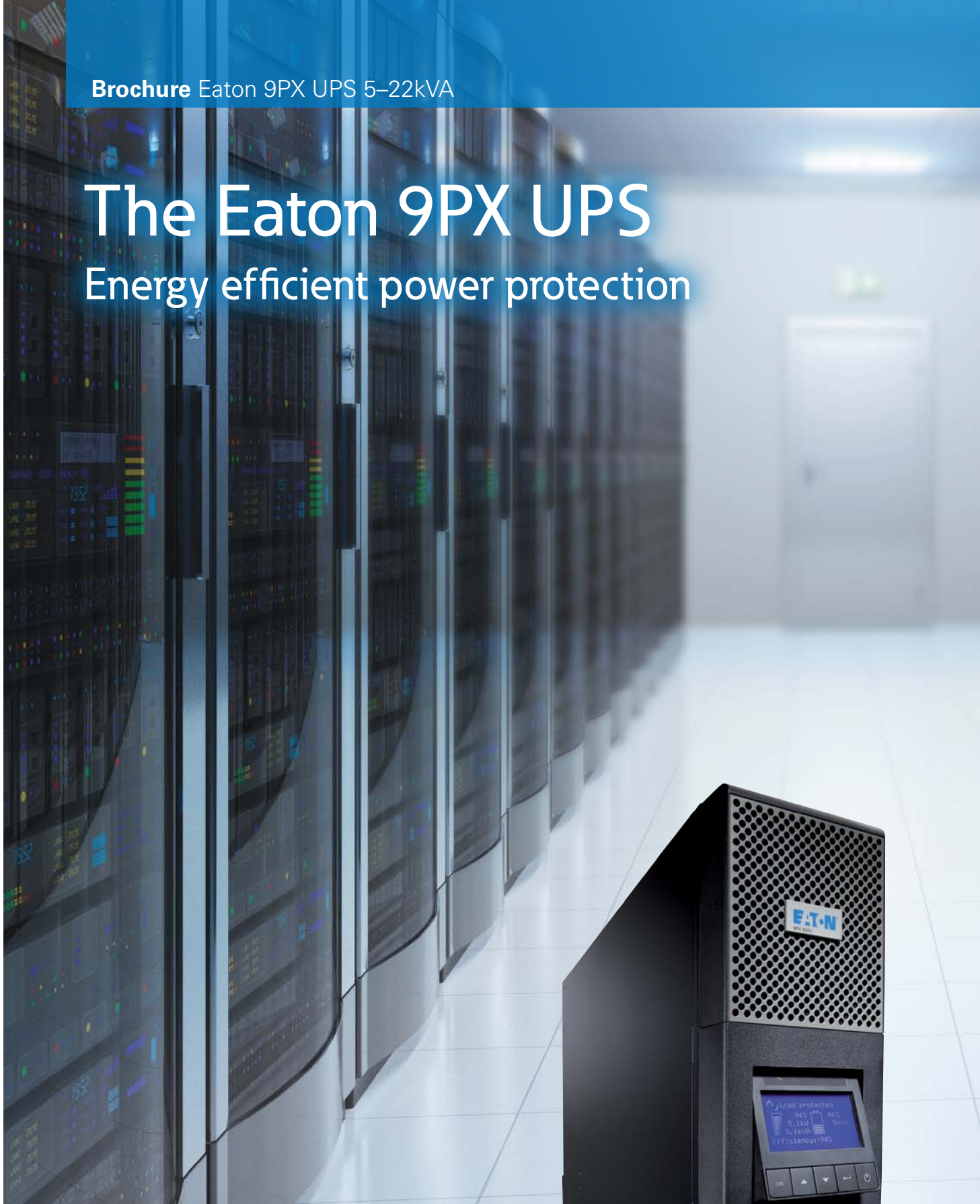


Brochure Eaton 9PX UPS 5–22kVA

The Eaton 9PX UPS

Energy efficient power protection



EATON

Powering Business Worldwide

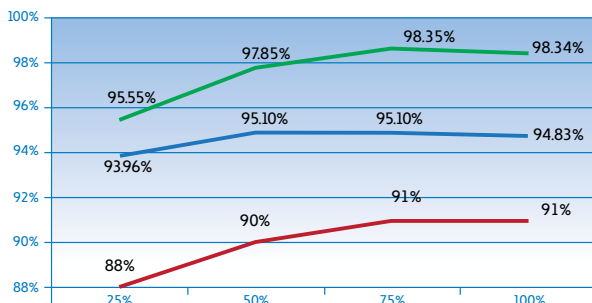
Performance and efficiency come together in the Eaton 9PX UPS.

As an industry professional, and because of rising energy costs and the business need for energy-efficient performance, you'll be looking for ways to reduce costs and consumption. The Eaton 9PX UPS enables you to secure all your mission-critical applications, giving you the reductions in energy usage and costs you need.

Eaton 9PX UPS key benefits.

- Constantly monitors power conditions and regulating voltage and frequency
- Up to **95% efficiency** in online double conversion mode and 98% in high-efficiency mode
- 0.9 power factor delivers **28% more power** than any UPS in its class
- Compact rack/tower versatile form factor, delivering up to **5400W in only 3U** and **10kW in only 6U**

Essentially, the Eaton 9PX UPS gives you the chance to optimise power density and minimise capital and operating expenditure, along with the assurance that, should the power go down, critical processes will be maintained in your IT infrastructures and other applications.



- 9PX 11kVA HE Mode
- 9PX 11kVA Online Mode
- Legacy UPS



9PX 1:1 is an Energy Star® qualified UPS.

Features that set the Eaton 9PX UPS apart.

- **New graphical LCD display** provides clear information on the UPS's status and measurements on a single screen which tilts 45° for ease-of-viewing
- **Metering energy consumption** – kWh values can be monitored using the LCD or our own Intelligent Power® Software
- **Availability and flexibility** – The internal bypass allows service continuity in case of internal fault, a maintenance bypass is also available for easy replacement of the UPS without powering down critical systems
- **Paralleling functionality** to achieve twice the power of unitary products using HotSync technology
- **Load segment control** enables prioritised shutdowns of nonessential equipment to maximise battery runtime for critical devices (5 and 6kVA 1:1 UPS)
- **Serial, USB and relay connectivity**, plus an extra slot for an optional communication card
- **Intelligent Power® Software** compatible with all major OS including virtualisation software such as VMware and Hyper-V is included with each UPS
- **Eaton ABM® battery management** technology for longer battery life
- Plus, add more runtime with up to **12 external hot-swappable battery modules**, able to run systems for hours if necessary



Eaton 9PX UPS can easily be used as a rack or a tower model.

Eaton innovating for more than 50 years.

Eaton has been safeguarding the critical systems of businesses across the globe for over half a century. Whether protecting a single desktop or the largest datacentre, Eaton solutions provide clean, uninterrupted power to keep mission-critical applications working.

We offer a comprehensive range of environmentally-sensitive, efficient, reliable UPSs, surge protective devices, power distribution units (PDUs), remote monitoring, meters, software, connectivity, enclosures, airflow management and professional services.



As the ultimate protection for your IT equipment, the Eaton 9PX UPS also integrates seamlessly into all major virtual environments including VMWare, Hyper-V, Citrix XenServer, RedHat KVM. With Eaton you are sure to benefit from the best of virtualisation technology.

To find out more, please visit

www.eaton.eu/9PX



9PX LCD tilts 45° for ease-of-viewing.

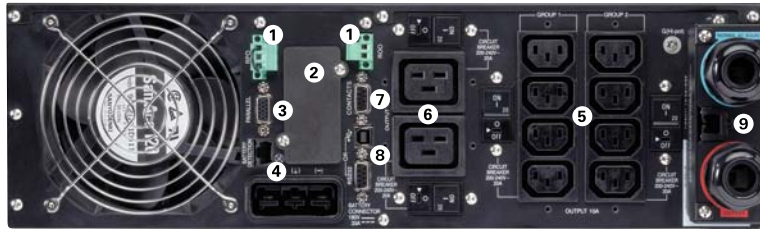


9PX 11kVA with maintenance bypass.



Eaton 9PX UPS Technical Specifications

- 1 Remote Off/On and Remote Power Off connectors
- 2 Slot for Network-MS, ModBus-MS or Relay-MS cards
- 3 Parallel operation port (DB15)
- 4 External battery module (EBM) connector with automatic detection (RJ11)



- 5 8 IEC 10A sockets (2 groups of 4 manageable sockets) with cable retention system
- 6 2 IEC 16A sockets with cable retention system
- 7 DB 9 with output contacts
- 8 USB and serial ports
- 9 Input/Output connection

Eaton 9PX 6kVA 1:1

| Technical Specifications | 5kVA 1:1 | 6kVA 1:1 | 6kVA 3:1 | 8kVA 1:1 or 3:1 | 11kVA 1:1 or 3:1 | | |
|--|---|--------------------------------|---|---|---------------------------|---------------|----------------|
| Rating (kVA/kW) | 5kVA/4.5kW | 6kVA/5.4kW | 6kVA/5.4kW | 8kVA/7.2kW | 11kVA/10kW | | |
| Electrical Characteristics | | | | | | | |
| Technology | On-line double conversion with Power Factor Correction (PFC) system | | | | | | |
| Input voltage | 200/208/220/230/240V 1:1 | | 200/208/220/230/240V/250V 1:1, 380/400/415 3:1 | | | | |
| Input voltage range | 176-276V without derating (up to 100-276V with derating) 1:1, 305V-480V without derating (up to 175V-480V with derating) 3:1 | | | | | | |
| Output voltage/THDU | 200/208/220/230/240V +/- 1%; THDU <2% | | | | | | |
| Input frequency range/THDI | 40-70Hz, 50/60Hz autoselection, frequency converter as standard, THDI < 5% | | | | | | |
| Efficiency | Up to 94% in Online mode, 98% in Hi-Efficiency mode | | | Up to 95% in Online mode, 98% in Hi-Efficiency mode | | | |
| Short circuit current | 90A | 90A | 90A | 120A | 150A | | |
| Overload capacity | 102-110% : 120s, 110-125%: 60s, 125-150%: 10s, >150%: 500ms | | 102-110% : 120s, 110-125%: 60s, 125-150%: 10s, >150%: 900ms | | | | |
| Connections | | | | | | | |
| Input | Terminal block (up to 10 mm ²) | | Terminal block (up to 16mm ²) | | | | |
| Outputs | Terminal block + 2 controlled groups of 4 IEC C13 (10A) + 2 IEC C19 (16A) | | Terminal block | | | | |
| Outputs with HotSwap Maintenance Bypass | Terminal block + 3 IEC C13 (10A) + 2 IEC C19 (16A) | | Terminal block+4IECC19(16A) | | | | |
| Batteries | | | | | | | |
| Typical backup times at 50 and 70% load* | | | | | | | |
| 9PX | 13/10 min | 11/8 min | 30/20min | 20/15 min | 13/9min | | |
| 9PX + 1 EBM | 60/40 min | 48/34 min | 70/45min | 48/32 min | 32/21 min | | |
| 9PX + 4 EBM | 220/150 min | 170/120 min | 210/140 min | 140/100 min | 100/70 min | | |
| Battery management | ABM and Temperature compensated charging method (user selectable), automatic battery test, deep discharge protection, automatic recognition of external battery units. | | | | | | |
| Communication | | | | | | | |
| Communication ports | 1 USB port, 1 RS232 serial port (USB and RS232 ports cannot be used simultaneously), 4 dry contacts (DB9), 1 mini terminal block for remote On/Off and 1 for remote power Off, 1 DB15 for parallel operation. | | | | | | |
| Communication slot | 1 slot for Network-MS card (included in Netpack versions), ModBus-MS or Relay-MS cards. | | | | | | |
| Operating conditions, standards and approvals | | | | | | | |
| Operating temperature | 0 to 40°C continuous | | | | | | |
| Noise level | <45dB | <45dB | <48db | <48db | <50db | | |
| Safety | IEC/EN 62040-1, UL 1778 (1:1 version) | | | | | | |
| EMC, performance | IEC/EN 62040 -2, FCC Class A (1:1 version), IEC/EN 62040-3 (Performance) | | | | | | |
| Approvals | CE, CB report (TUV), UL (1:1 version) | | | | | | |
| Dimensions H x W x D/Weight | | | | | | | |
| UPS dimensions | 440(19")*130(3U)*685mm | 440(19")*130(3U)*685mm | 440(19")*260(3U+3U)*700mm | 440(19")*260(3U+3U)*700mm | 440(19")*260(3U+3U)*700mm | | |
| UPS weight | 48kg | 48kg | 88kg | 84kg (1:1), 88kg (3:1) | 86kg (1:1), 88kg (3:1) | | |
| EBM dimensions | 440(19")*130(3U)*645mm | 440(19")*130(3U)*645mm | 440(19")*130(3U)*680mm | 440(19")*130(3U)*680mm | 440(19")*130(3U)*680mm | | |
| EBM weight | 68kg | 68kg | 65kg | 65kg | 65kg | | |
| Power module dimensions | - | - | 440(19")*130(3U)*700mm | 440(19")*130(3U)*700mm | 440(19")*130(3U)*700mm | | |
| Power module weight | - | - | 23kg | 19kg (1:1), 23kg (3:1) | 21kg (1:1), 23kg (3:1) | | |
| Customer Service and Support | | | | | | | |
| Warranty | 2 years warranty | | | | | | |
| * Runtimes are shown at 0.7 power factor. Backup times are approximate and may vary with equipment, configuration, battery age, temperature, etc | | | | | | | |
| Parts Numbers | | | | | | | |
| UPS with HotSwap Maintenance Bypass | 9PX5KiBP | 9PX6KiBP | 9PX8KiBP | 9PX11KiBP | 9PX6KiBP31 | 9PX8KiBP31 | 9PX11KiBP31 |
| UPS with Network Card and Rack Kit | 9PX5KiRTN | 9PX6KiRTN | - | - | - | - | - |
| UPS with HotSwap MBP, Network Card and Rack Kits | - | - | 9PX8KiRTNBP | 9PX11KiRTNBP | 9PX6KiRTNBP31 | 9PX8KiRTNBP31 | 9PX11KiRTNBP31 |
| EBM | 9PXEBM180 | 9PXEBM180 | 9PXEBM240 | 9PXEBM240 | 9PXEBM240 | 9PXEBM240 | 9PXEBM240 |
| Power Module | - | - | 9PX8KiPM | 9PX11KiPM | 9PX6KiPM31 | 9PX8KiPM31 | 9PX11KiPM31 |
| HotSwap Maintenance Bypass | MBP6Ki | MBP6Ki | MBP11Ki | MBP11Ki | MBP11Ki31 | MBP11Ki31 | MBP11Ki31 |
| 9PX ModularEasy (paralleling kit) | 9PXMEZ6Ki | 9PXMEZ6Ki | 9PXMEZ11Ki | 9PXMEZ11Ki | - | - | - |
| Supercharger with Rack Kit | - | - | SC240RT | SC240RT | SC240RT | SC240RT | SC240RT |
| 1.8m Battery Connection Cable | EBMCBL180 | EBMCBL180 | EBMCBL240 | EBMCBL240 | EBMCBL240 | EBMCBL240 | EBMCBL240 |
| Accessories | Rack kit: 9RK, Transformer (Single Phase): TFMR11Ki, Battery Integration System: BINTSYS | | | | | | |
| 9PX Parallel* | | | | | | | |
| | 9PX 10kVA 1:1 (5kVA redundant) | 9PX 12kVA 1:1 (6kVA redundant) | 9PX 16kVA 1:1 (8kVA redundant) | 9PX 22kVA 1:1 (11kVA redundant) | | | |
| | 9PXM10KiRTN | 9PXM12KiRTN | 9PXM16KiRTN | 9PXM22KiRTN | | | |

*9PX Parallel system includes 2 x 9PX, ModularEasy (Parallel kit), rail kits and network cards